



INCREASED SECURITY, FLEXIBILITY
AND PERFORMANCE

The New Generation of Temaline Controller

TemaServer TS2

The new generation of Temaline controllers provide increased security, flexibility, performance and are even easier to configure.

The TS2 remains a fully autonomous controller and continues to offer a high level security solution that you can trust, as Temaline has always offered.

Thanks to the peer-to-peer communication the TS2 offers the full

availability of peripheral devices even in case of disconnection from the supervisory centre.

The unique shared-load capability ensures 100% availability of your field devices in the case of failure of a controller.

Higher performance

- The TS2 memory allows you to manage up to 250k cards. The factory default setting is to manage 100k cards complete with personnel names, 100k transaction buffer and 10k event buffer.

Number of cards	Transaction buffer	Event buffer
100,000	100,000	10,000

- The memory is fully configurable enabling it to be used in a way that best meets the project needs: eg in a large facility it will be configured to accept the maximum number of cardholders.
- The new TS2 supports up to 16 doors with a reader on each side of the door.
- With on-board 100MB Ethernet connection the new TS2 is able to maximise the usage of the network capacity, making the firmware and data download faster.
- All Temaline 'TemaKey' devices are supported by TS2.

More secure

Communication with the supervisory level can be set as IPSEC (Internet Protocol Security). This ensures the origin of data authentication, data integrity, data confidentiality (encryption) and replay protection – ensuring total security of the communications.

The communication with field devices includes command authentication to ensure that commands sent to outputs are

coming from the right and certified source. It also encrypts the card numbers to avoid any 'capturing' from sniffer devices – making security system breaches from external devices virtually impossible.

With the possibility to be configured in a redundant architecture, the TS2 can guarantee full availability of your security system 24/7.

More flexible

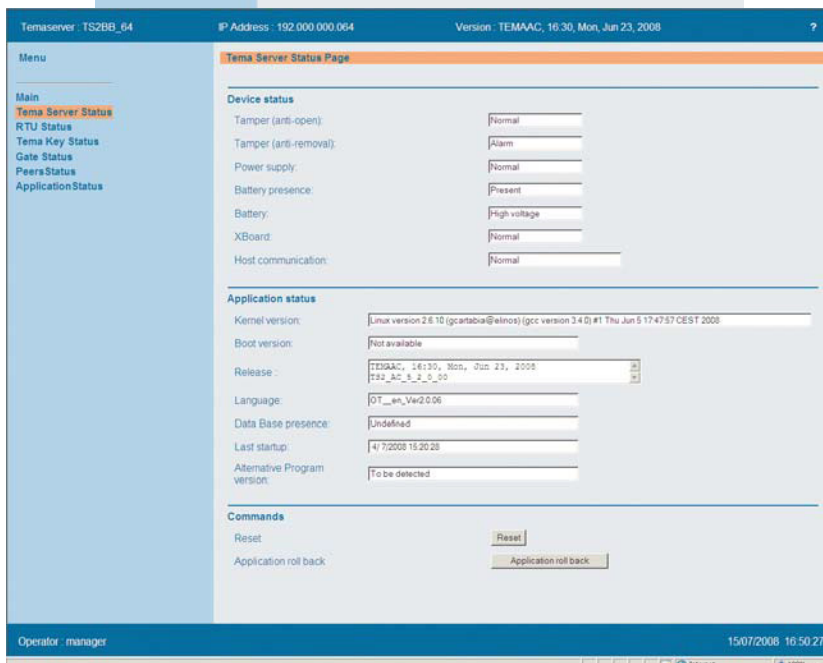
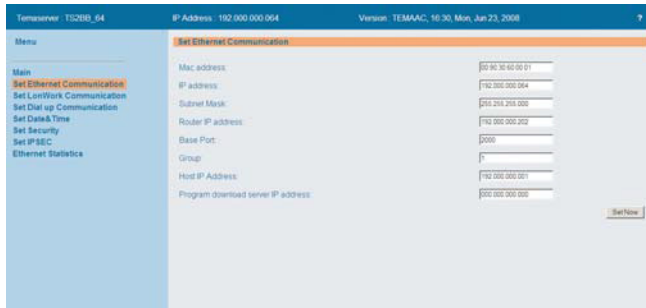
TS2 supports Access Control, T&A and Lift Management in one application allowing you to optimise the use and the distribution of your devices.



Easier to use

An intuitive Web interface makes the TS2 available via any Web browser. This makes it easy to configure, download the latest firmware or carry out any maintenance activity.

Different operator profiles enable the correct operability for the operator and a 'user wizard' makes field device commissioning very easy and minimises errors.



Technical Features



- Microprocessor Freescale Coldfire MCF5471, 32bits with Linux O.S.
- 128 MB of high performance DDR SRAM
- 64MB of FLASH memory
- Management of up to 16 doors with readers on both sides of the door
- Management of up to 64 I/O
- Autonomous clock/calendar with geographic time zone support and daylight saving time. Ten days of autonomy in case of power failure
- Battery backup, with full functionality for 90 minutes in case of power failure and signalling of the battery-charge status
- Low voltage power-supply (12V DC/AC) for safety during maintenance
- Tamper protection of the unit to detect unauthorised opening
- Watchdog protection for recovering in case of malfunctions

Key Features

- Management of up to 16 doors
- Up to 250,000 cards memory
- 10/100MB direct LAN/WAN connection
- Based on Linux Operating System
- Built-in Barracuda Web server
- WEB pages
- IPSEC with 3DES encryption on LAN communication
- Command authentication on LON devices
- Card number encryption



Specifications

Specification	TemaServer TS2	
Technical		Microprocessor 32bits - Freescale Coldfire MCF5471 Operative system LINUX
		Flash memory High reliability NOR Flash Spansion 64 Mbytes
		SDRAM memory High performance DDR 128 Mbytes
		Real time clock Internal RTC; retention time 10 days using super capacitor
		Security screw 2 Torx screw
		Anti-tampering 1 internal switch (against opening)
		Battery recharge time 80% of capacity in 8 hours
		Battery autonomy 90 minutes (Battery 100% efficiency)
		LONWORKS™ connection Unshielded twisted-pair cable in free topology (MIP FT3150)
Electrical	Supply Voltage	12V DC -20% / +20%
	Power Consumption	400mA (nominal), 600mA max. (during battery recharge time)
	Interface	10/100 BaseT standard unshielded cable on RJ45 - Auto-MDIX: automatically detects and corrects for straight or cross-over cables
Physical	Protection Rating	IP55
	Dimensions	W = 221mm H = 305mm D = 47mm
	Weight	2.4 Kg (including frame and battery)
	Colour	Grey RAL7035
	Case material	ABS, rated UL 5VA, 3 mm thick
Environmental	Operating Temperature	-10°C up to +49°C
	Storage Temperature	-20°C up to +50°C
	Storage humidity	Up to 90% not condensing
	Certification	<div style="display: flex; justify-content: space-between; align-items: center;"> <div style="text-align: center;">  <p>EN60950, EN50130-4, EN55022-B, EN55024, EN50133 Recognition class: 2, 3 Access class: B Environment Class: II RoHS / WEEE compliant device Directives 2001/95/EC, 2011/65/EU</p> </div> <div style="text-align: center;">  </div> </div>

NOTE: Honeywell reserves the right, without notification, to make changes in product design or specifications.

Find out more:

<http://www.temaline.honeywell.com>

Honeywell Security Group

Via della Resistenza 53/59

20090 Buccinasco (MI)

Italy

www.honeywell.com

TEMA-TS2-03-EN(0314)DS-E

March 2014

© 2014 Honeywell International Inc.

